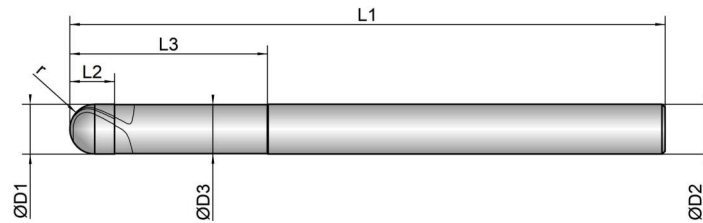


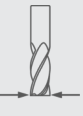
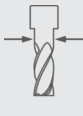
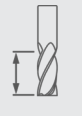

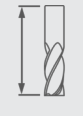
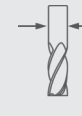



Kühlung	
Toleranz	f7
Beschichtung	-



HA K203001



Stahl			Gehärteter Stahl				INOX (VA)	Guss	NE-Werkstoffe				Inconel	Abrasivmaterial		Titan
< 850 N/mm	< 1100 N/mm	< 1400 N/mm	< 55 HRC	< 60 HRC	< 67 HRC	< 70 HRC			Alu	Kupfer	Mg	Kunststoffe		CFK / GFK	Grafit	
80	50						45	75	190	170	240					

K203001	D1  mm Ø	D3  mm Ø	L2  mm	L3  mm	L1  mm	D2  mm Ø	z  #	r  mm	 °
1/6	1,0	0,9	2,0	6,0	100,0	6,0	2	0,50	30
2/6	2,0	1,8	3,0	8,0	100,0	6,0	2	1,00	30
3/6	3,0	2,8	4,0	12,0	100,0	6,0	2	1,50	30
4/6	4,0	3,8	5,0	16,0	100,0	6,0	2	2,00	30
5/6	5,0	4,8	6,0	20,0	100,0	6,0	2	2,50	30
6/6	6,0	5,8	6,0	25,0	100,0	6,0	2	3,00	30
6/8	6,0	5,8	6,0	25,0	100,0	8,0	2	3,00	30
8/8	8,0	7,8	7,0	32,0	100,0	8,0	2	4,00	30
8/10	8,0	7,8	7,0	32,0	120,0	10,0	2	4,00	30
10/10	10,0	9,8	9,0	40,0	120,0	10,0	2	5,00	30
10/12	10,0	9,8	9,0	40,0	160,0	12,0	2	5,00	30
12/12	12,0	11,8	11,0	50,0	160,0	12,0	2	6,00	30
12/16	12,0	11,8	11,0	50,0	200,0	16,0	2	6,00	30
16/16	16,0	15,5	14,0	60,0	200,0	16,0	2	8,00	30